

CONOLOG® PROGRESSIVE-LINE

Immediacy and conical performance at bone level

Clinical summary update for PROGRESSIVE-LINE. Update September 2021.

Clinical summary update for PROGRESSIVE-LINE

CONOLOG® PROGRESSIVE-LINE was launched about two years ago. The implant combines a state-of-the-art surface, a best-in-class conical connection [1, 2] coupled with an outer geometry which is geared towards immediacy. This document provides insights into the available scientific and clinical documentation.

Precision of the conical connection

The precision of the implant-abutment connection is of major importance for the fabrication and later fit of the prosthetic restorations and their accuracy from the model to the patient's mouth. CONOLOG® showed the best-in-class results in terms of rotational displacement and canting moment range [1, 2]. The CONOLOG® implant-abutment connection showed evidence of high-precision manufacturing and superior positional stability when compared with other conical connections.

Additionally, there are several features which ease the clinical handling of the connection. One of them is the "vertical fit feature" (see Fig. 1).

Excellent bone preservation

Preservation of the crestal bone is important for the peri-implant's long-term stability. Studies with CONOLOG® implants with integrated platform switching showed very stable conditions [3, 4] and even slight bone gain 5-year postloading [5, 6]. These data confirm the positive effect of platform switching found in studies with CAMLOG® implants [7, 8].

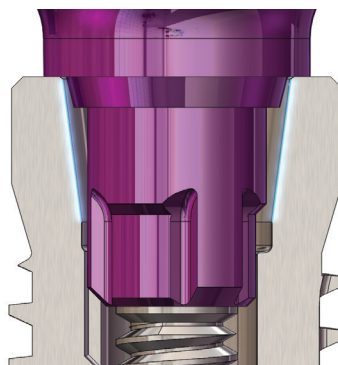


Fig. 1: "Vertical fit feature": the impression post is not in contact with the cone during impression-taking. The vertical discrepancies – inherent to all conical connections – are reduced by this concept.

Clinically proven success and patient satisfaction

The PROMOTE® surface has proven to be effective in various preclinical and clinical studies over years [9]. For CONOLOG® implants, several clinical studies documented very positive mid- and long-term treatment outcomes in different indications and loading modalities [3-6, 10-12]. A high survival rate, excellent stability of hard and soft tissues as well as high patient' satisfaction could be shown in a multicenter study in daily dental practice with follow-up controls up to 7 years [3]. The short implants (7 mm) are established as a reliable and safe treatment option to avoid sinus augmentation procedures in the posterior maxilla [4] as well as with splinted and nonsplinted fixed dental prostheses in the posterior mandible [13].

A reliable option for immediacy cases and challenging clinical situations

First clinical case series show that the PROGRESSIVE-LINE implant demonstrates excellent stability [14]. The tread design of the PROGRESSIVE-LINE implant makes it suitable for immediate placement and immediate loading technique (see Fig. 2 and 3; [15]). Especially the crestal anchorage thread makes it possible to place the implant with primary stability, even in patients with low residual bone height (less than 3 mm) [16].



Fig. 2: Soft tissue in an immediate placement case. Courtesy of Dr. Ramón Gómez Meda. [15]

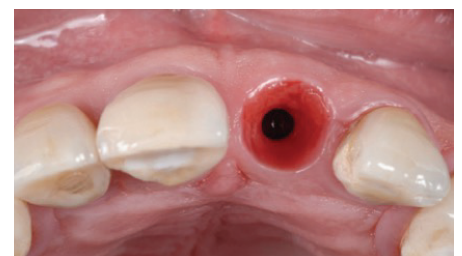


Fig. 3: After 8 weeks and removal of the provisional restoration, the peri-implant region impresses with its voluminous and healthy tissue. Courtesy of Dr. Ramón Gómez Meda. [15]

References

- [1] Semper-Hogg W, Zulauf K, Mehrhof J, Nelson K. The Influence of Torque Tightening on the Position Stability of the Abutment in Conical Implant-Abutment Connections. *Int J Prosthodont* 2015;28(5):538-541
- [2] Semper-Hogg W, Kraft S, Stiller S, Merhof J, Nelson K. Analytical and experimental position of the abutment in different dental implant systems with a conical implant-abutment connection. *Clin Oral Investig*. 2013;17:1017-23
- [3] Ackermann K-L, Barth T, Cacaci C, Kistler S, Schlee M, Stiller M. Clinical and patient-reported outcome of implant restorations with internal conical connection in daily dental practices: prospective observational multicenter trial with up to 7-year follow-up. *Int J Implant Dent*. 2020;6(1):14
- [4] Lorenz J, Blume M, Korzinskas T, Ghanaati S, Sader RA. Short implants in the posterior maxilla to avoid sinus augmentation procedure: 5-year results from a retrospective cohort study. *Int J Implant Dent*. 2019;5(1):3
- [5] Moergel M, Rocha S, Messias A, Nicolau P, Guerra F, Wagner W. Radiographic evaluation of conical tapered platform-switched implants in the posterior mandible: 1-year results of a two-center prospective study. *Clin Oral Implants Res*. 2016;27(6):686-93
- [6] Moergel M, Nicolau P, Rocha S, Messias A, Guerra F, Wagner W. Clinical and radiographic performance of self-locking conical connection implants in the posterior mandible: Five-year results of a two-centre prospective study. *Clin Oral Implants Res*. 2021;32(8):998-1007
- [7] Messias A, Rocha S, Wagner W, Wiltfang J, Moergel M, Behrens E, et al. Peri-implant marginal bone loss reduction with platform-switching components: 5-Year post-loading results of an equivalence randomized clinical trial. *J Clin Periodontol*. 2019;46(6):678-87
- [8] Beschnidt SM, Cacaci C, Dedeoglu K, Hildebrand D, Hulla H, Iglhaut G, Krennmair G, Schlee M, Sipos P, Stricker A, Ackermann KL. Implant success and survival rates in daily dental practice: 5-year results of a non-interventional study using CAMLOG-SCREW-LINE implants with or without platform-switching abutments. *Int J Implant Dent*. 2018;4(1):33
- [9] Camlog. The Promote® surface - a state of the art titanium surface for implant dentistry. 2021;M-0173-WPR-EN-INT-BHCL-00-012021. 01/2021:1-2
- [10] Cacaci C, Ackermann KL, Barth T, Kistler S, Stiller M, Schlee M. A non-interventional multicenter study to document the implants success and survival rates in daily dental practices of the CONELOG screw-line implant. *Clin Oral Investig*. 2019;23(6):2609-16
- [11] Molina A, Sanz-Sanchez I, Martin C, Blanco J, Sanz M. The effect of one-time abutment placement on interproximal bone levels and peri-implant soft tissues: a prospective randomized clinical trial. *Clin Oral Implants Res*. 2017;28(4):443-52
- [12] Fierravanti L, Ambrosio N, Molina A, Sanz I, Martin C, Blanco J, et al. The effect of one-time abutment placement on marginal bone levels and peri-implant soft tissues: A prospective randomized clinical trial. *Int Poster J Dent Oral Med*. 2018;20(ORGS): Supplement, Poster 1211
- [13] Al-Sawaf O, Tuna T, Rittich A, Kern T, Wolfart S. Randomized clinical trial evaluating the effect of splinting crowns on short implants in the mandible three years after loading. *Clin Oral Implants Res*. 2020;00:1-11
- [14] Conserva E. Initial stability after placement of a new buttress-threaded Implant. *Implants* 2019;3:24-28
- [15] Gómez Meda R. Successful immediate implant loading – according to the socket-shield technique. *Implants* 2021;2:06-10
- [16] Ruppig J-M. One year clinical experience with PROGRESSIVE-LINE implants. *EDI Journal* 2020;4:54-63

Headquarters

CAMLOG Biotechnologies GmbH | Margarethenstr. 38 | 4053 Basel | Switzerland
Phone +41 61 565 41 00 | Fax +41 61 565 41 01 | info@camlog.com | www.biohorizoncamlog.com

CAMLOG®, CONELOG® and PROMOTE® are registered trademarks of CAMLOG Biotechnologies GmbH.
They may, however, not be registered in all markets.
CAMLOG® and CONELOG® products are manufactured by: ALTATEC GmbH | Maybachstr. 5 | 71299 Wimsheim | Germany

